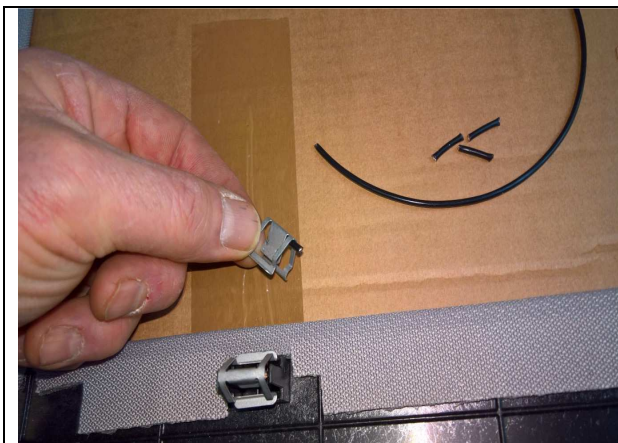


Tips & Tricks Interior Finish H300

Sunroof:
Doc Nr.:
Date:

Hollandia 300
30041401B
24-01-2017



Tip:

To avoid trimshell clamps to slide on too much and therefor not flexing anymore, shove a short piece of $\varnothing 1,5$ mm Electrical wire in upper part of clamp!



Read standard installation instructions:

This advise is in addition to the standard installation instructions H300.

Please read the standard installation instructions H300 and this Tips & Tricks Interior Finish H300 Advice before starting the installation.

Extra materials/tools available for the additional actions:

- H300 Mounting set trimshell to headliner. Art. Nr.: 3395297A.
- Pop rivet pliers.



Shown is H300 Rear drive trimshell finish from rear at Kia Cee'd SW 2013.

Optimal trimshell finish is not allways happening because of car specific headliners and circumstances, but adaption can be done in many occasions and result in acceptable interior finish.

Tips & Tricks Interior Finish H300

Sunroof:
Doc Nr.:
Date:

Hollandia 300
30041401B
24-01-2017



Fact:

When height difference between roofskin and underside original headlining is 35-40 mm all around, the trimshell finish can be done with the standard trimshell.

When underside roof skin is completely cleaned, measure height difference between roofskin and underside original headlining all around.

PS. This can be done before or after making aperture in roof skin!



Start at middle front.



Then 100 mm to the left. Etcetera.



Etcetera .

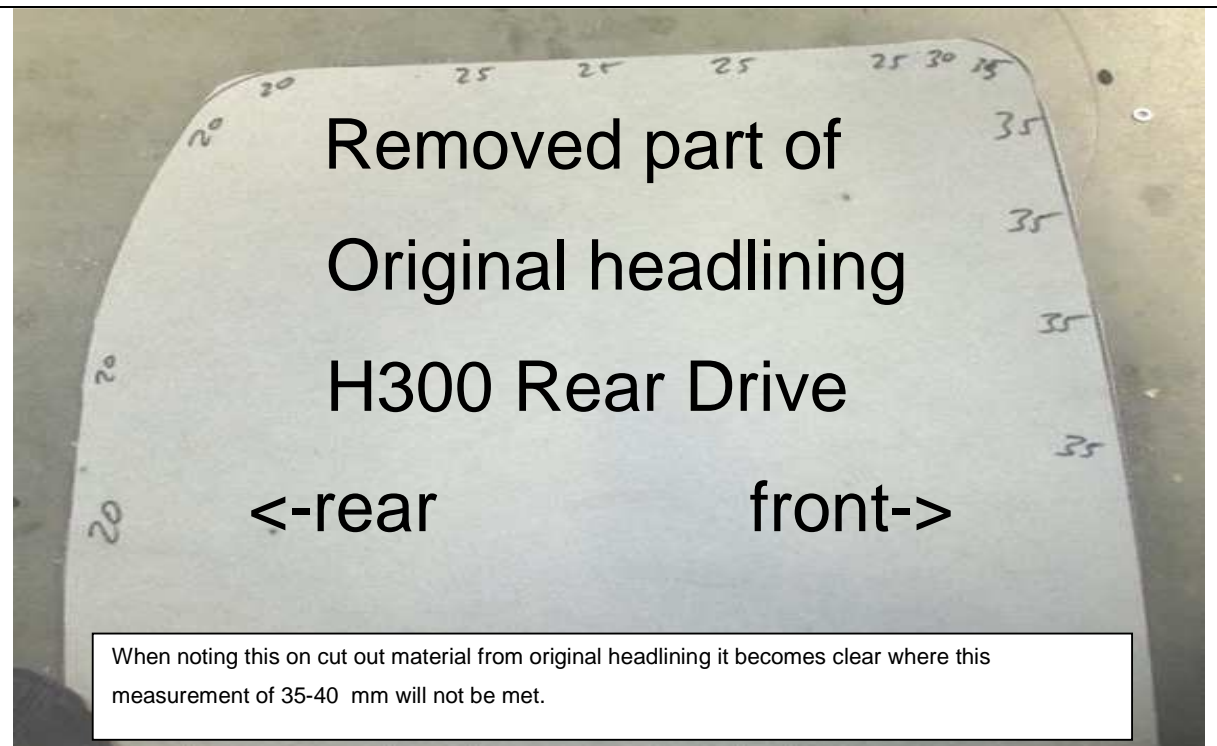


Untill at the rear middle position.

Tips & Tricks Interior Finish H300

Sunroof:
Doc Nr.:
Date:

Hollandia 300
30041401B
24-01-2017



Opportunities for making acceptable **trimshell finish**, by:

A.	Placing filling material between roofskin and headlining.	Page 4.	Approx. 4 Min.
B.	Placing brackets on trimshell.	Page 5 – 12.	10 Min.
C.	Placing filling material between headlining and trimshell in the front.	Page 13 - 15.	5 Min.
D.	Adapting shape trimshell to shape headlining.	Page 15 – 16.	15 Min.

How to proceed depends on original headlining:

- Material.
- Thickness.
- Resilience.
- Strength.
- Attachment.
- Etcetera.

And height difference between roofskin and headliner.

Tips & Tricks Interior Finish H300

Sunroof:
Doc Nr.:
Date:

Hollandia 300
30041401B
24-01-2017

A. Placing filling material between roofskin and headlining.



Before.

Measured space at sides is 20 to 25 mm at sides.

Use –for example- 20 mm wide strip of removed headlining material from aperture in headlining.



After.

Careful.

Success is very dependable of material headlining, because some could be showing cracks very fast.

See start of crack at end of arrow in picture!

For easy access, place filling material BEFORE placing Sunroof unit. See picture.

Tips & Tricks Interior Finish H300

Sunroof:
Doc Nr.:
Date:

Hollandia 300
30041401B
24-01-2017

B. Placing brackets on trimshell.

Circumstances can make it necessary to use flexibility of trimshell and flexibility of original headlining to close a gap. This flexibility is –normally- only present on rear side.

Placing bracket can be the solution.

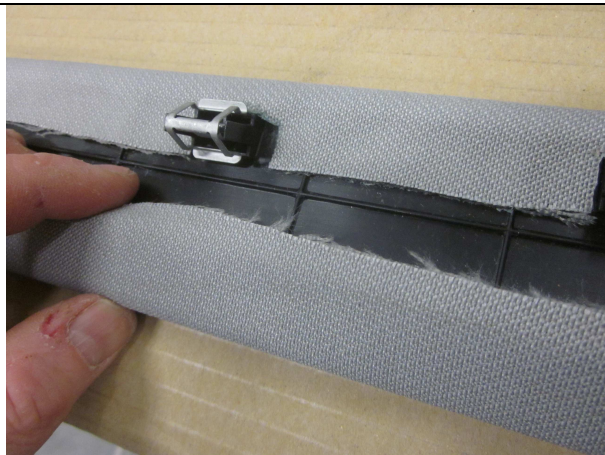
Use H300 Mounting set trimshell to headliner. Art. Nr.: 3395297A.



Determine necessary number and positions brackets. Mark these positions on headlining with paper tape. Copy these to rear side of trimshell.

Note!

The number and locations depend on circumstances, like for example presence interior lights or height difference in headlining etc.



Peel off fabric at outer side (=without clips) only.

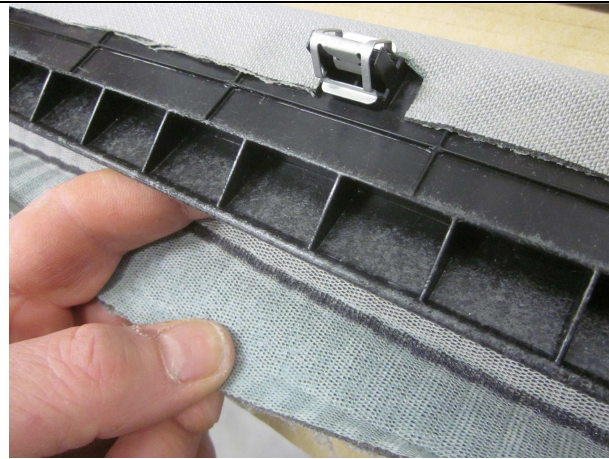
Note.

Make sure to place trimshell on a clean surface. Also be sure to have clean hands or wear gloves, to make no stains on the fabric.

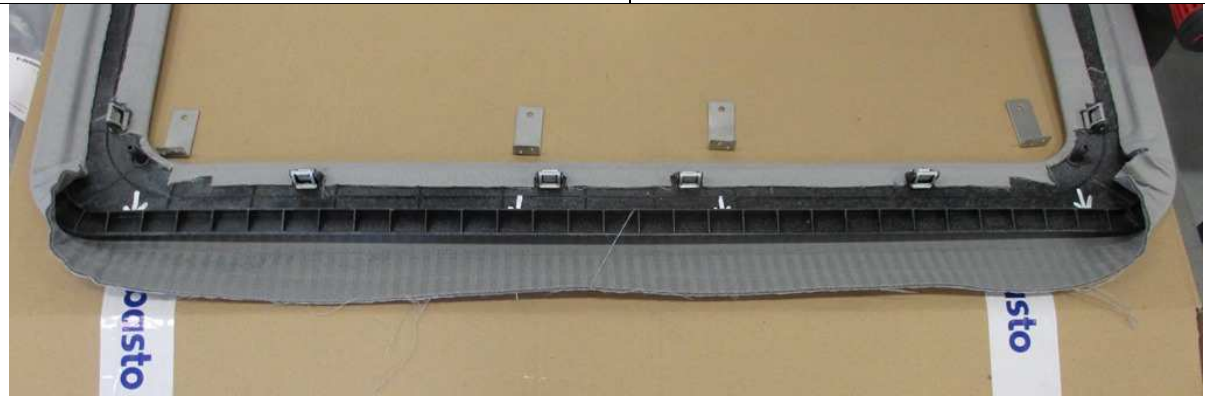
Tips & Tricks Interior Finish H300

Sunroof:
Doc Nr.:
Date:

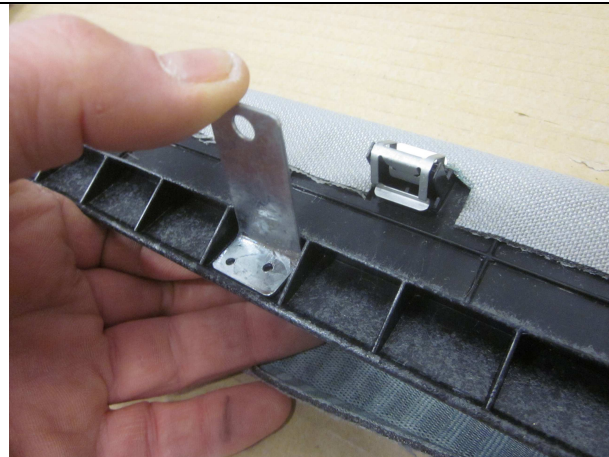
Hollandia 300
30041401B
24-01-2017



Remove fabric carefully.



Copy positions brackets on rear side trimshell.



Determine bracket position.




Note.

Place metal plate between trimshell and fabric to avoid damaging fabric and fingers.

Tips & Tricks Interior Finish H300

Sunroof:
Doc Nr.:
Date:

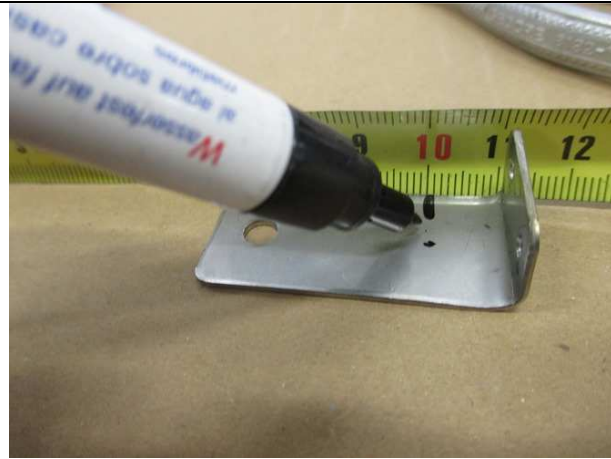
Hollandia 300
30041401B
24-01-2017

	<p>Drill holes according holes in bracket.</p> <p>Remark! Place metal plate and fold away fabric for not damaging fabric.</p>
	<p>Remove drilling chips completely.</p>
	<p>Measure thickness original headlining material at each determined bracket position.</p>

Tips & Tricks Interior Finish H300

Sunroof:
Doc Nr.:
Date:

Hollandia 300
30041401B
24-01-2017



Mark height headlining material on bracket.



Bend bracket at marked position.

Make first bend in workbench vice, because the material is too rigid to bend by hand.

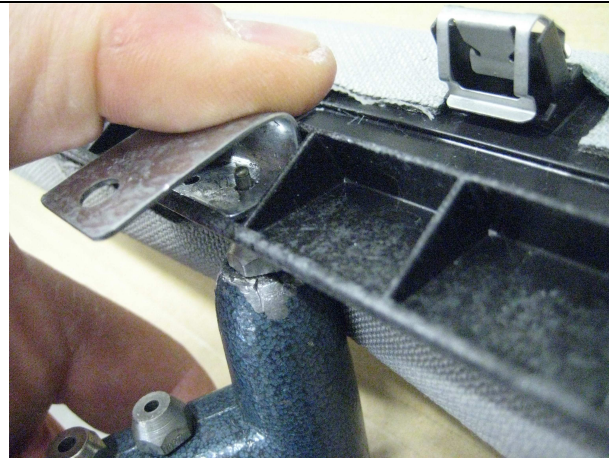
After making first fold, it is possible to bend it further in the wanted position with manual pliers.



Tips & Tricks Interior Finish H300

Sunroof:
Doc Nr.:
Date:

Hollandia 300
30041401B
24-01-2017

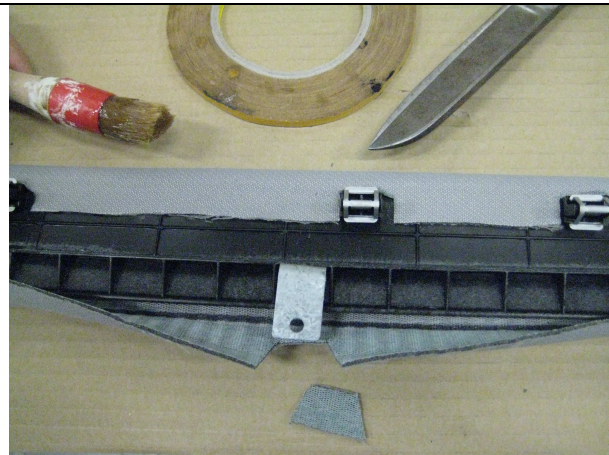


Attach bracket in position with pop rivets.



Check gap for original headlining.

See arrow in picture.



Prepare fabric around bracket for placing it back.

Glue fabric back with coated glue, or use double-sided tape to place fabric back on trimshell again.

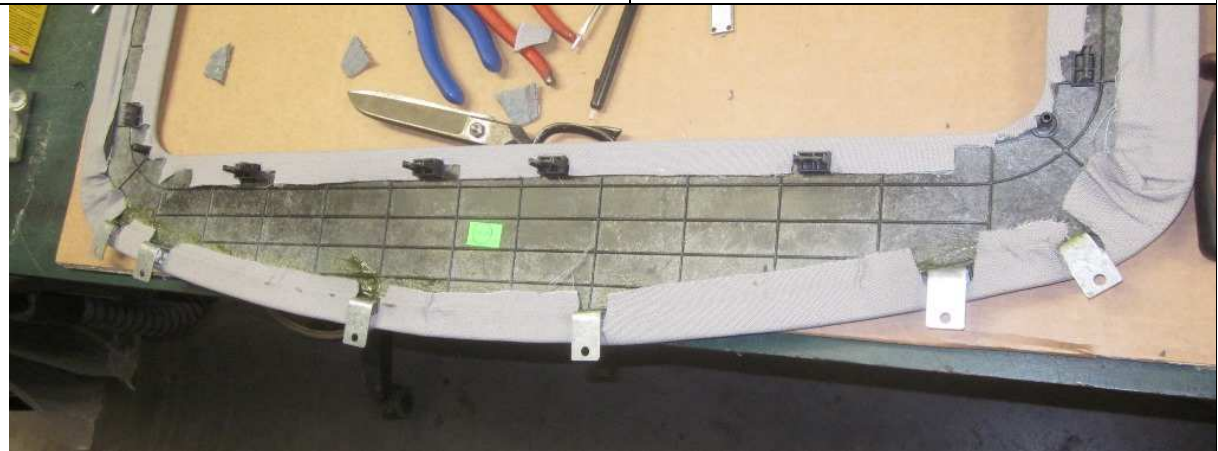
Tips & Tricks Interior Finish H300

Sunroof:
Doc Nr.:
Date:

Hollandia 300
30041401B
24-01-2017



Finished.



Install as much as necessary brackets to have a perfect finish. For placement trimshell see following steps:



Hook brackets behind H300 frame, and above headlining.



Start in one corner ...

Tips & Tricks Interior Finish H300

Sunroof:
Doc Nr.:
Date:

Hollandia 300
30041401B
24-01-2017



... and then slide the other brackets also in position.



Center the trimshell.



Push the clamps in the designated apertures in trimming-frame. Start at the rear...



... and finish by pushing clamps in at the front.



Fasten trimshell screws to secure position.



Turn switch to go through opening in switch cover.



Place switch cover on H300 unit.



Carefully place switch in switch cover.

Note. Make sure to push in wire to switch in housing as far as possible, to avoid making pressure on rear of switch.

Tips & Tricks Interior Finish H300

Sunroof:
Doc Nr.:
Date:

Hollandia 300
30041401B
24-01-2017



Shown is H300 trimshell finish from rear at Ford Fiesta **with placed brackets on trimshell.**



This is picture of placed trimshell **without placing brackets on trimshell.**

Tips & Tricks Interior Finish H300

Sunroof:
Doc Nr.:
Date:

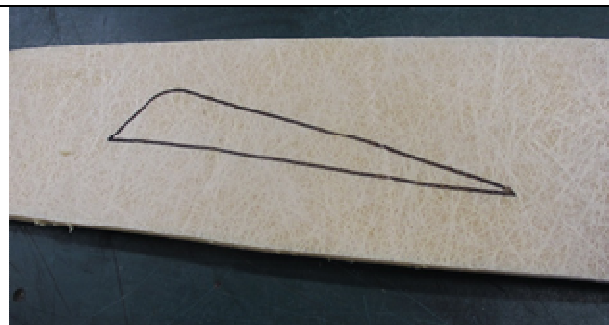
Hollandia 300
30041401B
24-01-2017

C. Placing filling material in between headlining and trimshell at the front.



Substantial height difference in front, next to lowering in headlining, can result in a large gap when using the trimshell.

PS. Although this gap normally cannot be seen when sitting in car, this gap is not wanted and can be closed.



Use large enough part (approximately 50 mm all around total measurement of gap) of removed headlining material to have the exact colour:

1. Determine measurement of gap and mark it on rear side.



2. Cut away –without damaging fabric!- foam material along marking.

Tips & Tricks Interior Finish H300

Sunroof:
Doc Nr.:
Date:



Hollandia 300
30041401B
24-01-2017

	<p>3. When necessary also cut off hard layer of material under fabric.</p>
	
	<p>4. Glue fabric around edges, by using self adhesive tape or glue.</p>
	

Tips & Tricks Interior Finish H300

Sunroof:
Doc Nr.:
Date:

Hollandia 300
30041401B
24-01-2017

	<p>5. Filling block ready for placement.</p>
	<p>Push made filling block in position with obvious result.</p>
<p>D. Adapting shape trimshell to shape headlining.</p>	